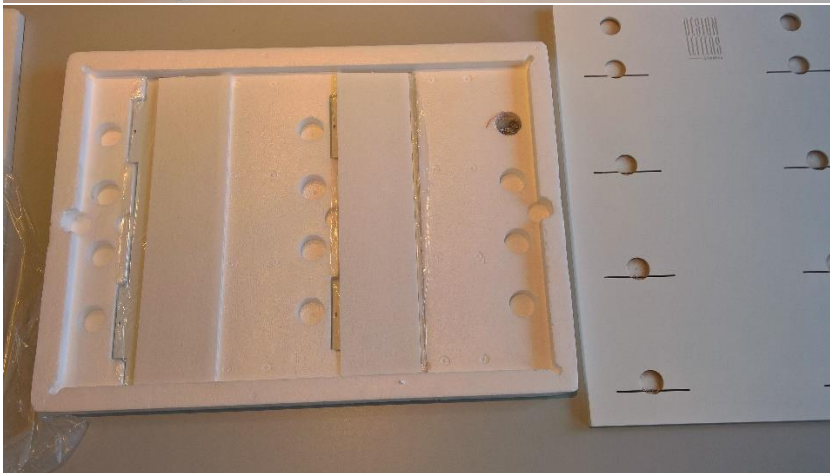


Assembly instruction for Paper Shelf, applies for all sizes.



Congratulations with your new
Design Letters PAPER SHELF.

This assembly manual shows how to
mount the steel shelves to back board.



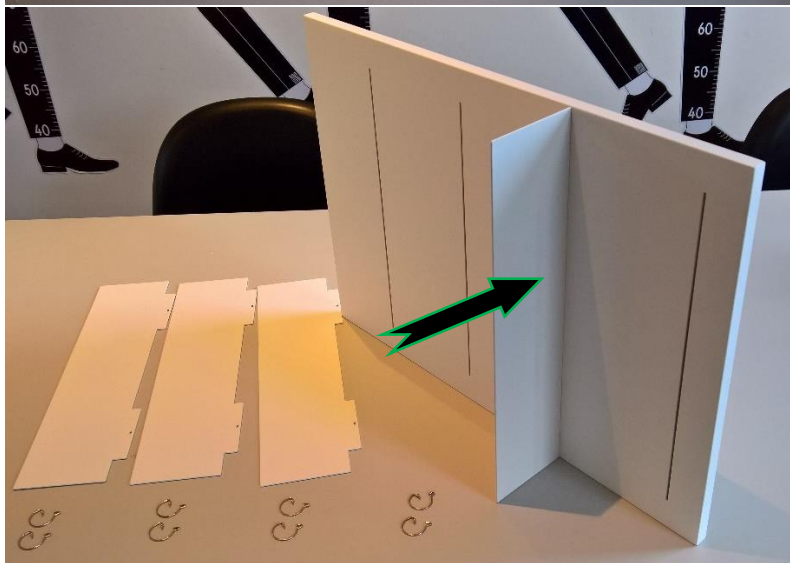
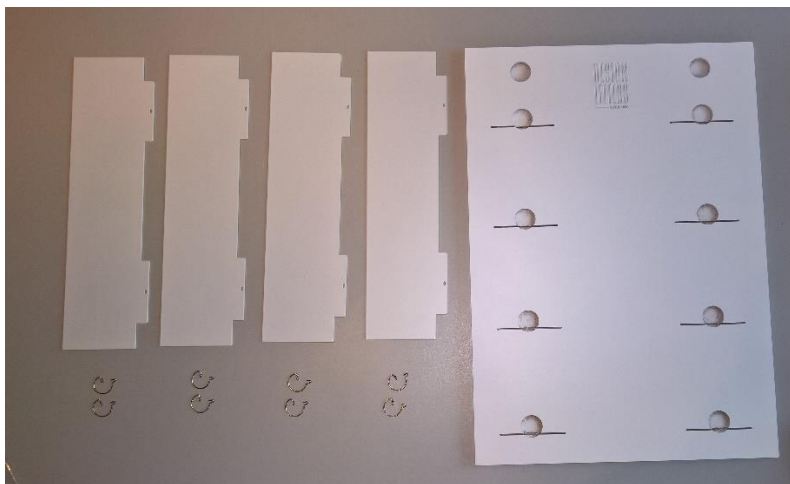
Unpack the parts.



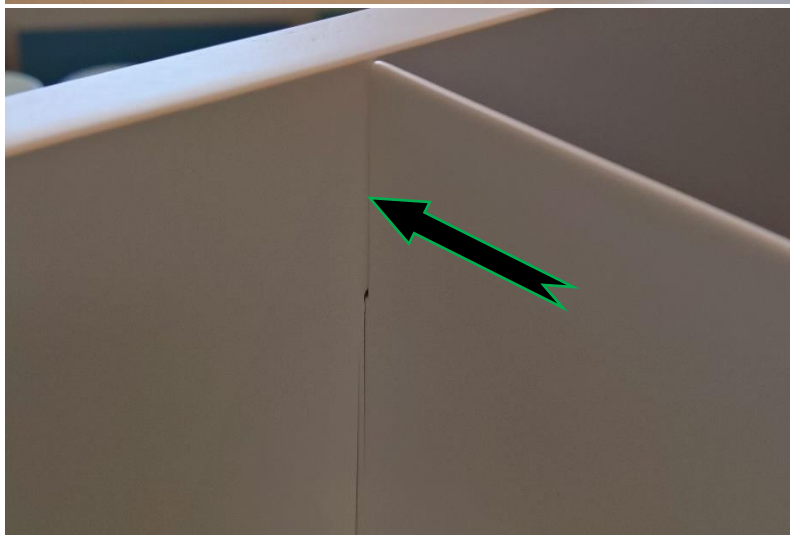
REMEMBER the small polybag containing
the wire clips! Before discarding the
package materials

The box contains: (in this case A2 size)

1. Back board.
2. 4 shelves.
3. 8 clips (2 pcs for each shelf)



Place back board on the side then slide in the steel shelves.



Make sure the shelves are pushed all the way so there is no gap between the shelf and the back board



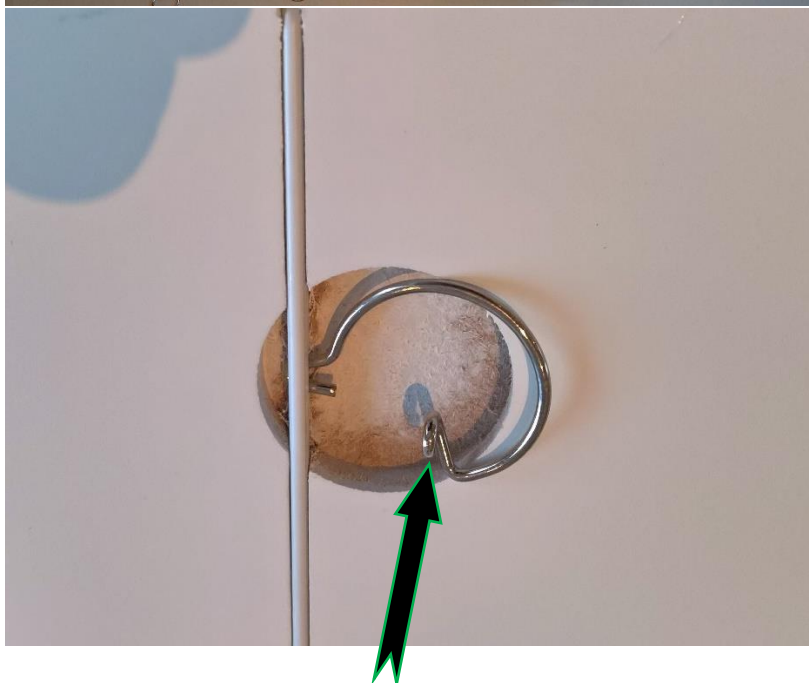
Important! It will be a very good idea to place the assembly on a towel or a sheet of cardboard to protect both your table as well as the corners of the shelves and back board!

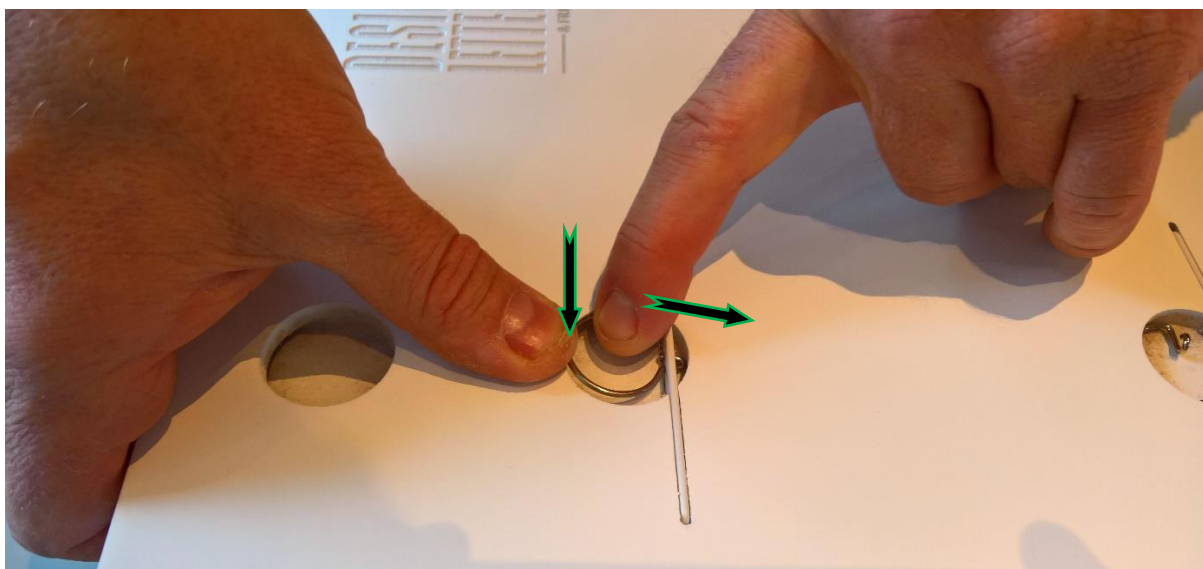
Turn the shelves and back board assembly so the back facing upwards



Place the clips as shown in picture

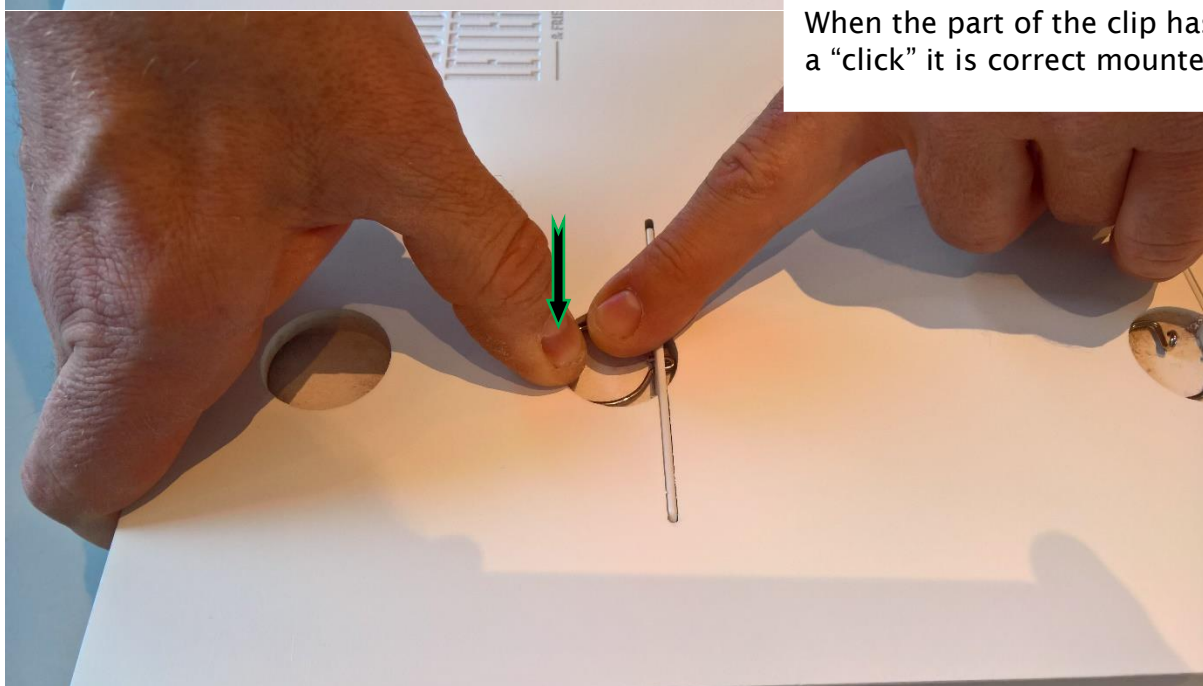
Make sure the small ring on the end of the clips are facing outward





Pull with your index finger the clip and press down with your thumb.

When the part of the clip has made a “click” it is correct mounted.



If it is hard to push the clips down with your fingers the end of a pencil or marker can be used

When the part of the clip has made a “click” it is correct mounted.

